

Eduardo e Cristina

Ouverture

Alto

Giacchino ROSSINI

Moderato

Musical score for Alto, Moderato section, measures 1-25. The score is written in 2/4 time with a key signature of one flat (B-flat). It begins with a forte (*f*) dynamic and a piano (*p*) dynamic. The music features a mix of eighth and sixteenth notes, with some rests and ties. A first ending bracket labeled 'A' spans measures 19-25. The section concludes with three chords marked *fp* (fortissimo piano) in measures 26-28.

Allegro Brillante

Musical score for Alto, Allegro Brillante section, measures 29-68. The tempo changes to Allegro Brillante. The key signature changes to two sharps (D major). The score includes a pizzicato (*Pizz.*) section in measures 38-43 and an arco (*Arco*) section in measures 44-54. The music is characterized by rapid sixteenth-note passages and chords. A second ending bracket labeled 'B' spans measures 62-68. The section ends with a forte (*f*) dynamic.



D

161



167



172



179



185



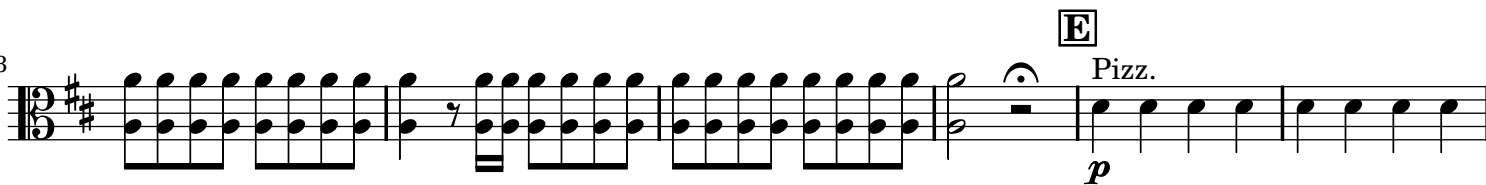
191



198



203



209



216



223



230

Arco sul ponticello



240



249



254



260



266



270

