

K.622

W.A. MOZART

I

[illegible]

17

21 

[illegible]

30 

46 

51

55 *f* *p* Solo

61 *tr* *tr* *tr*

68

75 **C** *f* *p* Tutti Solo

81 *f* *p*

88

94 **D** *f* *tr* *tr*

100 Solo *p*

107

115

121

E

128 *p*

135 *tr*

141 *tr*

149 *Tutti*
f

156

160 *p*

165

170 *Solo*
f *p*

178

188 *Tutti*
f *Solo*
p

196

205

212 **G** *f* *p*

219 *f* **Tutti**

228 *p*

233 *f* *p*

238 *f*

243 *tr*

247 *p* **Solo**

254 *tr* *tr*

263 **H** **Tutti** *f* *p*

271 **Solo**

281 *tr~* *tr~* **I** **Tutti** *f* **Solo**

289 *p*

298

307

K 316 *p* *tr*

323 *tr*

329 *tr*

337 *Tutti* *f*

344

350 *p*

356 *f*

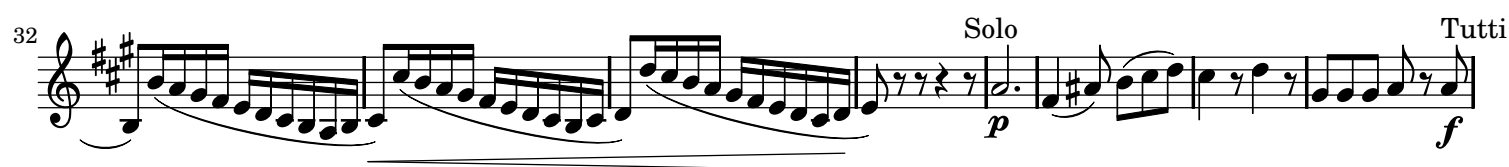
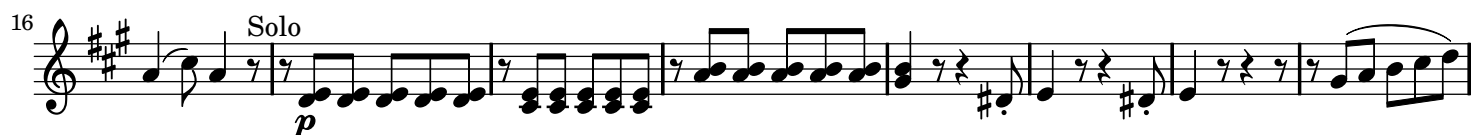
II

Adagio

Musical score for Violino 1, Adagio, page 7. The score is in treble clef with a key signature of two sharps (F# and C#) and a 3/4 time signature. It consists of ten staves of music. The first staff starts with a piano (*p*) dynamic. The second staff has a "Tutti" marking above and a forte (*f*) dynamic below, followed by a "Solo" marking and a piano (*p*) dynamic. The third staff has a "Tutti" marking above and a forte (*f*) dynamic below. The fourth staff has a "Solo" marking above and a piano (*p*) dynamic below. The fifth staff has a "Solo" marking above and a piano (*p*) dynamic below. The sixth staff has a "Solo" marking above and a piano (*p*) dynamic below. The seventh staff has a "Solo" marking above and a piano (*p*) dynamic below. The eighth staff has a "Solo" marking above and a piano (*p*) dynamic below. The ninth staff has a "Solo" marking above and a piano (*p*) dynamic below. The tenth staff has a "Solo" marking above and a piano (*p*) dynamic below. The score includes various musical notations such as slurs, ties, and dynamic markings (*p*, *f*, *pp*, *mf*, *meno p*). There are also section markers "L" and "M" in boxes. The piece ends with a double bar line.

III

Rondo - Allegro



P**Q****R**

217 *p* **S** 1 *p*

224

230 *sfp* *sfp*

238 *p* 1

246

253 *p* **Tutti** *f* *p*

259 *f* *p* **Solo** *p*

265

272 **T** **Tutti** *p*

278 **Solo** *p*

284 *Tutti* *f* *Solo* *p*

291 *Tutti* *f*

298 *Solo* *p*

304 *f* *p* *f*

310 *p*

315

321

328

334

340 *Tutti* *f*

347