

Horn Concerto in E \flat Major, K.495

Basso

Wolfgang Amadeus Mozart (1756-1791)

Allegro moderato (♩ = 112)

First staff (measures 1-5): Bass clef, E \flat major (three flats), common time. Starts with a forte (*f*) dynamic. The melody consists of eighth and sixteenth notes.

Second staff (measures 6-10): Continuation of the melody. Measure 10 ends with a repeat sign.

Third staff (measures 11-16): Measure 11 starts with a piano (*p*) dynamic. Measure 12 contains a boxed letter 'A'. The melody continues with eighth notes.

Fourth staff (measures 17-21): A continuous sixteenth-note pattern. Measure 21 is marked with a crescendo (*cresc.*).

Fifth staff (measures 22-26): Continuation of the sixteenth-note pattern. Measure 22 is marked with a forte (*f*) dynamic.

Sixth staff (measures 27-32): Continuation of the sixteenth-note pattern. Measure 32 contains a boxed letter 'B' and ends with a piano (*p*) dynamic.

Seventh staff (measures 33-41): Features half notes and quarter notes. Measure 37 is marked with a forte (*f*) dynamic.

Eighth staff (measures 42-49): Measure 42 contains a boxed letter 'C'. The staff is mostly rests, with a piano (*p*) dynamic.

Ninth staff (measures 50-55): Continuation of the piece. Measure 53 is marked with a forte (*f*) dynamic.

Tenth staff (measures 56-62): Continuation of the piece. Measure 56 is marked with a piano (*p*) dynamic.

Eleventh staff (measures 63-67): Measure 63 contains a boxed letter 'D'. The staff features a forte (*f*) dynamic in measure 63 and a piano (*p*) dynamic in measure 64.

Twelfth staff (measures 68-72): Continuation of the piece. Measure 70 has a sharp sign (#) above the note.

75

81

86

cresc. *f*

91

p *f* *p*

96

f *p* *p*

103

111

120

128

2

135

f *p*

144

f

150

p *f*

156

p *f*

162

p

E

F

G

H

I

K

A musical score for Bassoon (Basso) in B-flat major, 4/4 time. The score consists of 16 measures, numbered 75 to 162. The key signature has two flats (B-flat and E-flat). The score includes various musical notations such as eighth notes, quarter notes, half notes, and rests. Dynamic markings include *cresc.*, *f* (forte), *p* (piano), and *f* (forte). There are also articulation marks like accents and slurs. The score is divided into sections marked with letters in boxes: E (measures 86-91), F (measures 96-103), G (measures 111-120), H (measures 128-135), I (measures 144-150), and K (measures 156-162). The piece ends with a final measure at 162.

169 **L**

176

181

186 *cresc.* **f**

192 **f**

199

204 **M** *p*

213 **f**

Andante (♩ = 63)

p

10 **N** **f**

20 **O** *p*

31

41 **P** **f** *p*

52

65



77



Allegro vivace (♩. = 120)



7



14



23



34



44



53



64



73



80



90



100



108



118



126



133



142



151



162



172



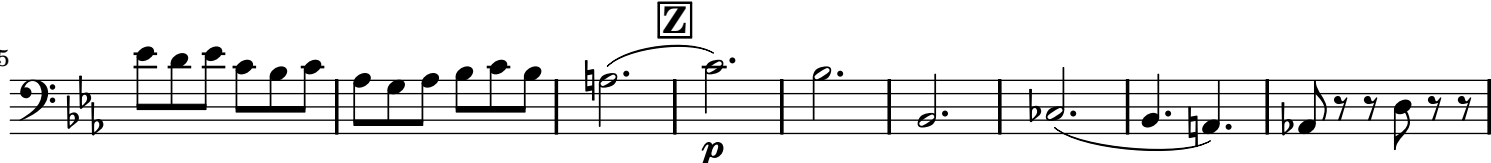
182



189



195



204

