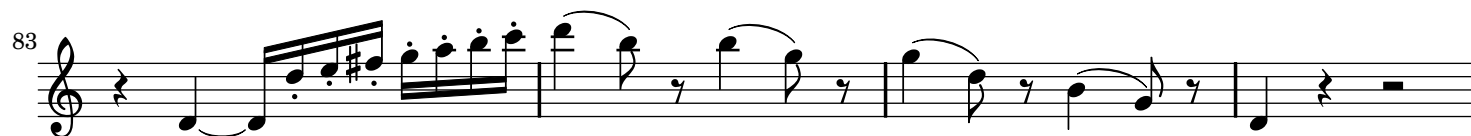
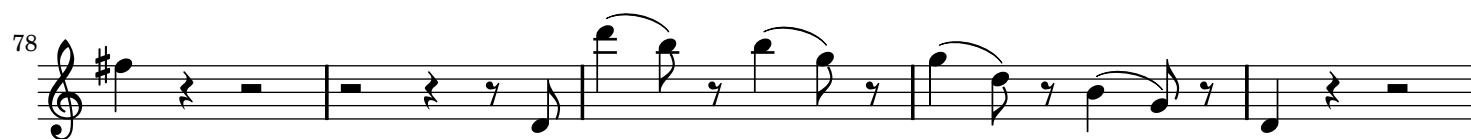
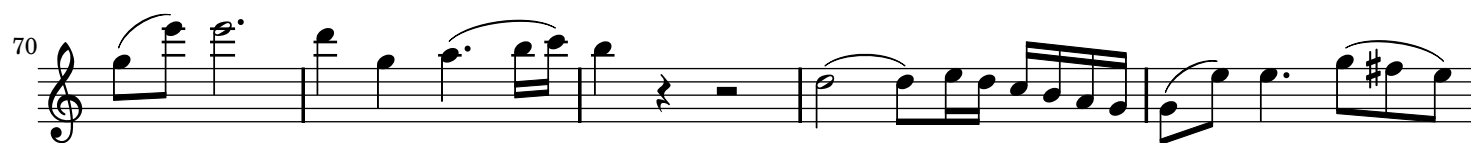
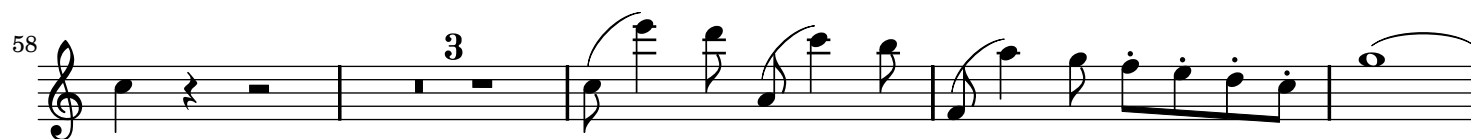
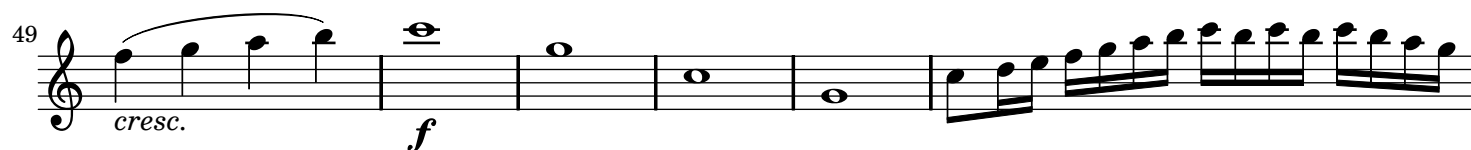
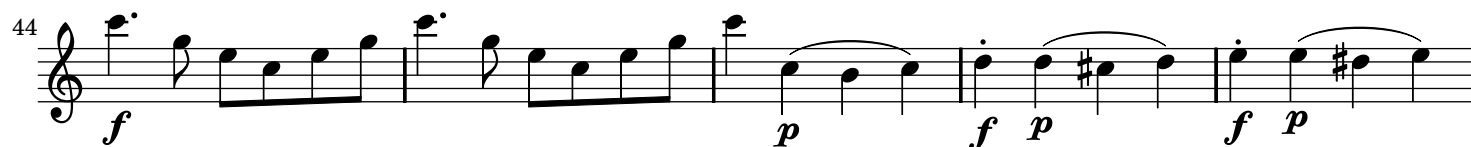


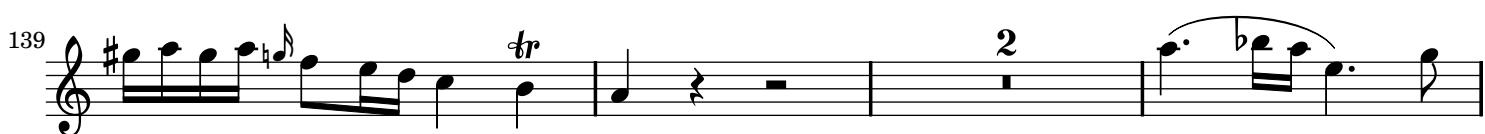
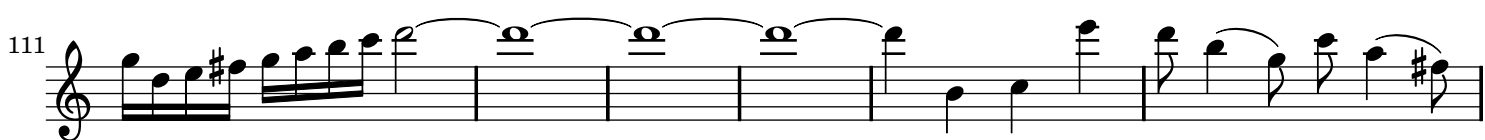
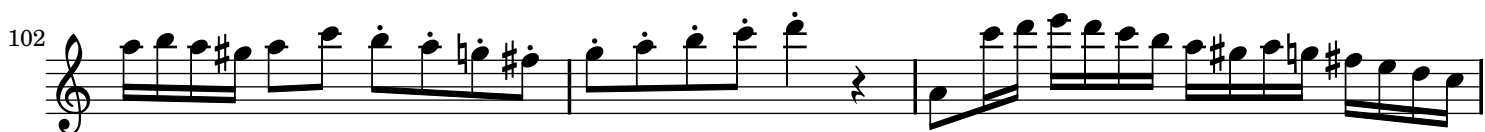
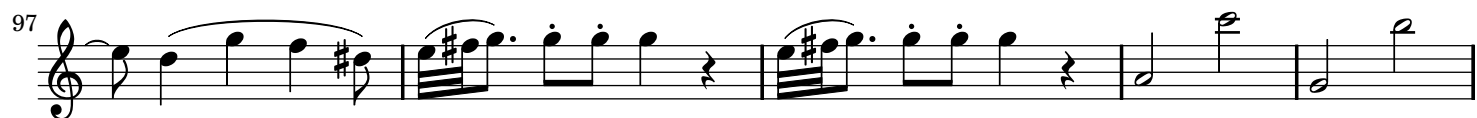
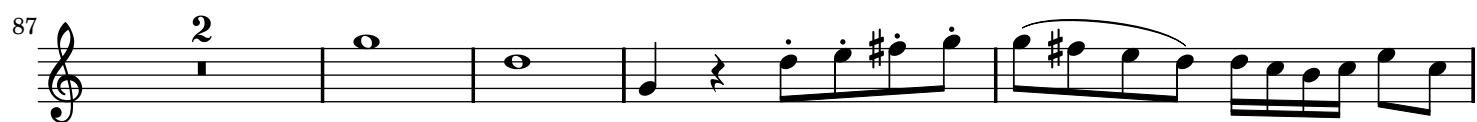
# Concerto in C for Flute and Harp

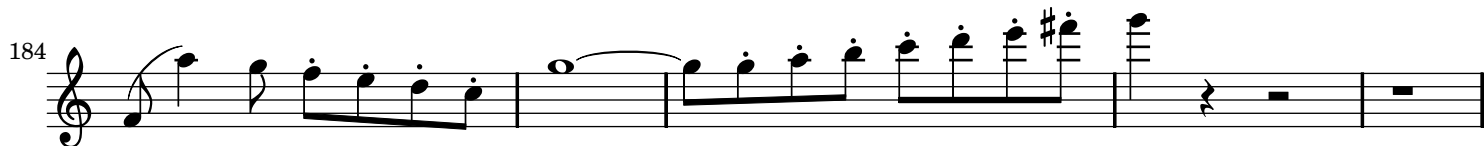
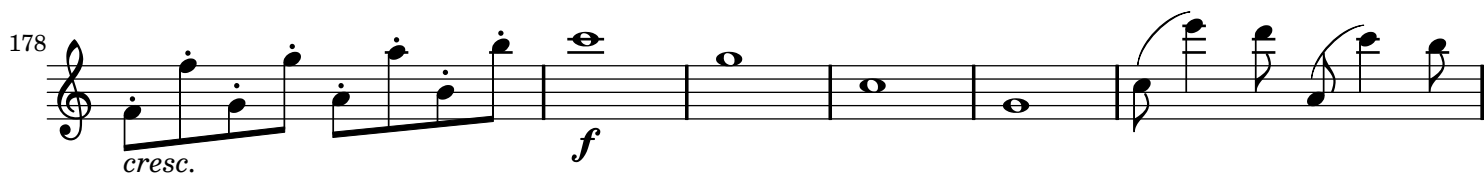
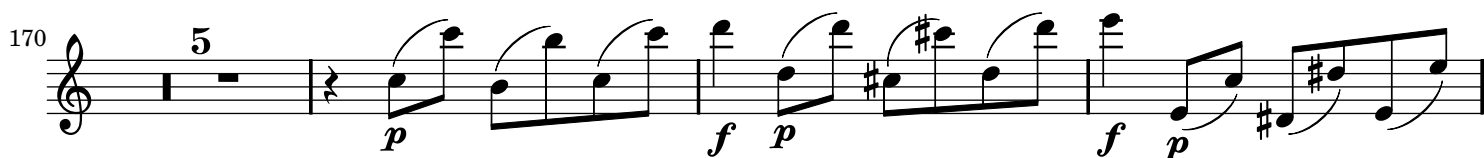
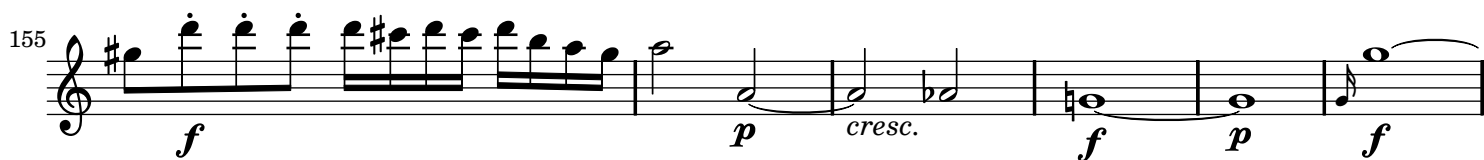
W. A. Mozart (1756-1791)

[ I. Allegro ]

Flauto Solo







197

200

204

208

215

218

222

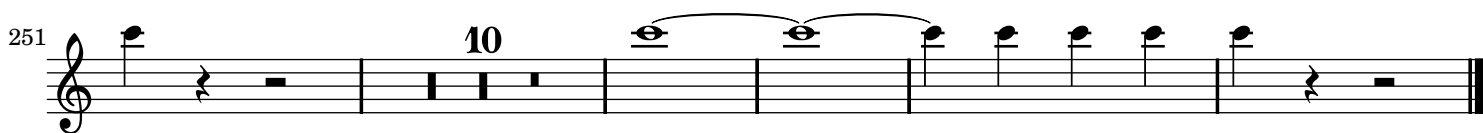
227

230

233

238

241

251 

[II. Andantino]

12 

18 

23 

29 

36 

42 

47 

51 

60 

65 

70

75

82

88

92

97

105

110

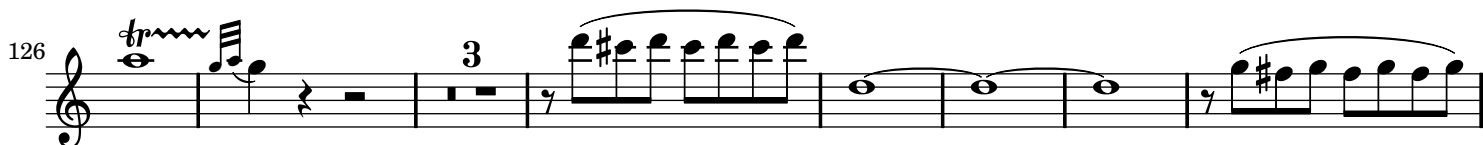
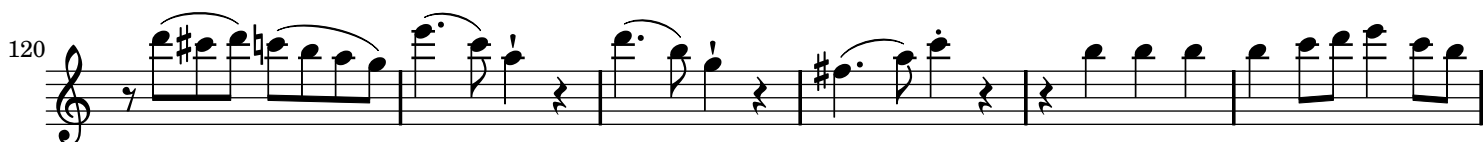
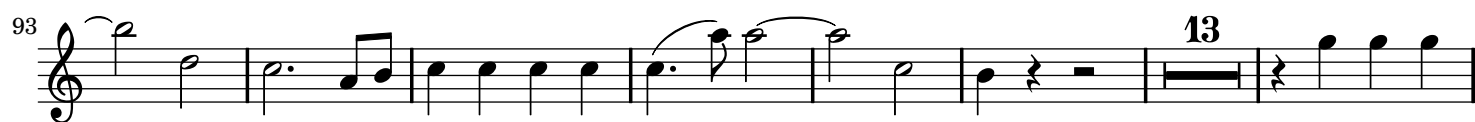
114

*f* *p* *f* *p* *pp*

### [III. RONDEU]

Flute *Allegro*  
65





165 *p* *cresc.* *f*

175 *p* *f* *p* *f*

180 *p* *p*

186 17

210 *tr*

215 *tr*

220 6

234

240

247

254

Detailed description: This musical score is for a single melodic line, likely for a flute or violin, spanning measures 165 to 254. The notation is in treble clef. The key signature has one sharp (F#), indicating D major or B minor. The piece features a variety of rhythmic patterns, including eighth and sixteenth notes, often beamed together. Dynamic markings include piano (*p*), crescendo (*cresc.*), and forte (*f*). Ornamentation is used, with trills (*tr*) appearing in measures 210 and 215. Measure numbers 17, 6, and 16 are placed above specific notes in measures 186, 220, and 234 respectively. The score is divided into systems of five staves each.

260

267

287

293

302

309

321

333

340

354

369

376

