

Symphonie en sol mineur

Violon 1

Etienne MEHUL

I

Allegro

7

15

23

30

35

43

51

58

f

p

ff

pp

cresc.

ff

p

A

B

66

73

80

87 C

93

99 *p* *p* *p*

107 D *f* 2

116

123 *p*

130 2

138 *f* *ff* *tr*

145 *sfz* *ff* *tr* **E**

153 *sfz* *ff* *tr*

161

167 *p*

174

180

186

192 *ff* **G**

198

207 *p* *f* 2

216

223

231 *pp*

238 *cresc.*

H

245 *ff*

252 *pp*

260 *cresc.*

266 *ff*

273

280

II

Andante

**A****B****C** Mineur**D**

64 **E**

F

81 **G**

89 **H** Majeur

96

I

119

128 **K**

133

140

146 **L**

151

156 **M**

161 *f* *mf* *p*

168 *f*

171

174 N

179

187 *p*

193 *fp fp fp*

198 *fp f > f > p > cresc. ff p*

206 *pp*

214 *ff p*

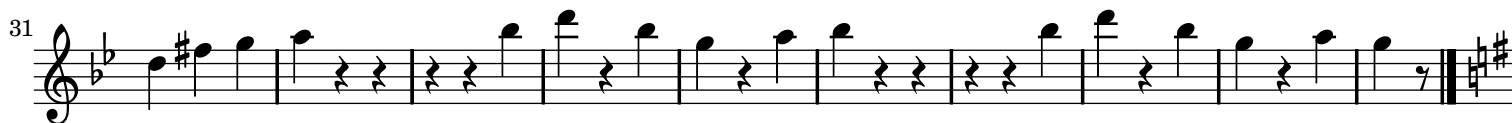
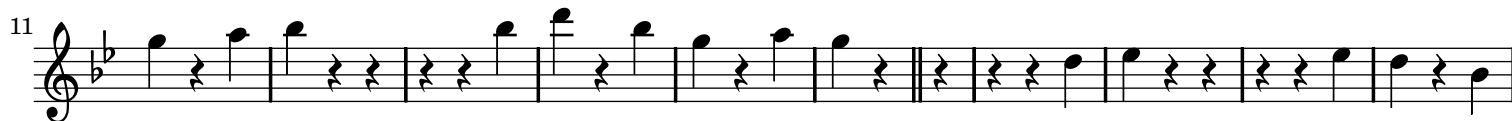
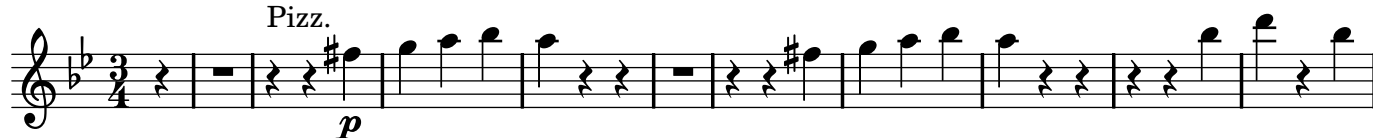
223 *ff p*

232

III

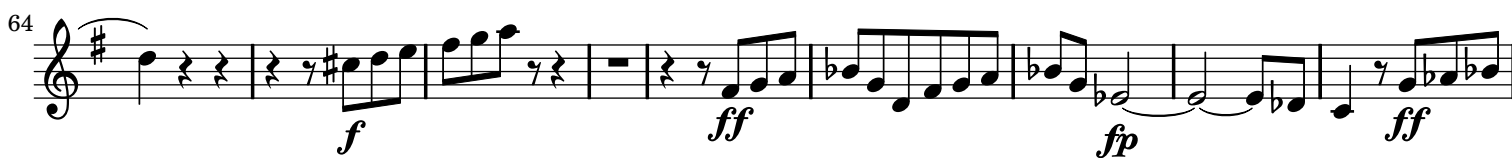
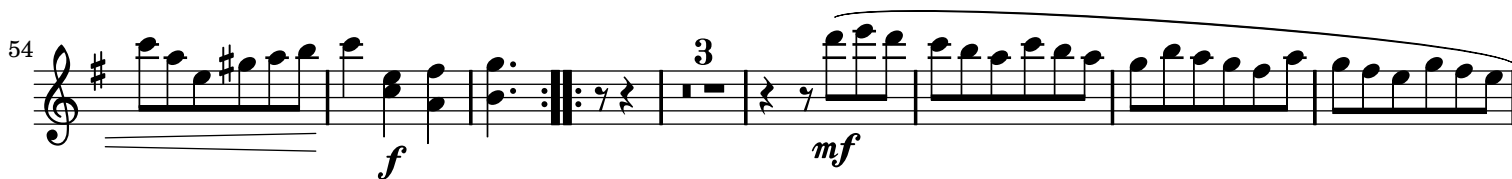
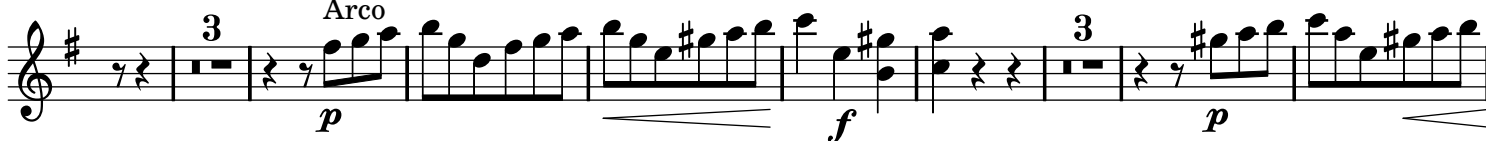
Allegro moderato

Pizz.



Trio

Arco



101

110

119

128

140

152

174

ff

ff

f

sfz

sfz

ff

p

3 Arco

3

13

IV

Allegro Agitato

5

12

p

f

p

f

p

3

20

27

A

ff

35

f *f*

43

f

50

55

p *p*

62

Pizz.

72

Arco
dolce *f* *p* *pp*

78

84

92

101

109

116

122

129

137

145

154

162

171

pp

ff

pp

ff

fp *f*

fp *f* *f*

fp *f* *p*

cresc. poco a poco

ff

180 *p*

185

192 *ff* *ff*

199

205

212

217 *sfz sfz sfz sfz* *p*

222 *Pizz.*

230 *Arco dolce* *f* *p*

236 *p*

241

246

253

260

267

272

278

283

289

295

302

308

313

This page contains the Violon 1 part of a musical score, measures 246 through 313. The music is written in G minor (three flats) and 4/4 time. The notation includes various rhythmic patterns such as eighth and sixteenth notes, often beamed together, and rests. Dynamic markings include *pp* (pianissimo) and *ff* (fortissimo). The score concludes with a double bar line at measure 313.