

String Quartet in C major ("Emperor")

Op. 76 No. 3

Franz Joseph Haydn (1732-1809)

Allegro.



8



16



21



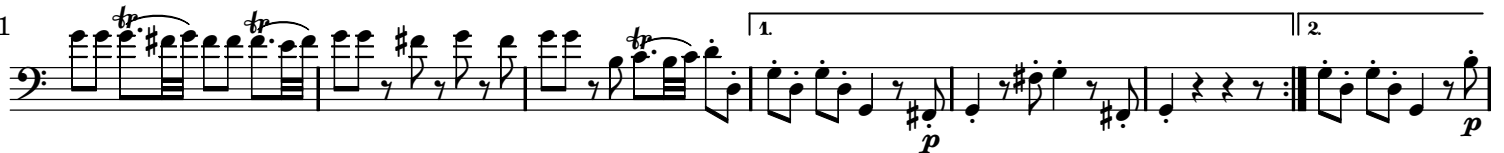
28



33



41



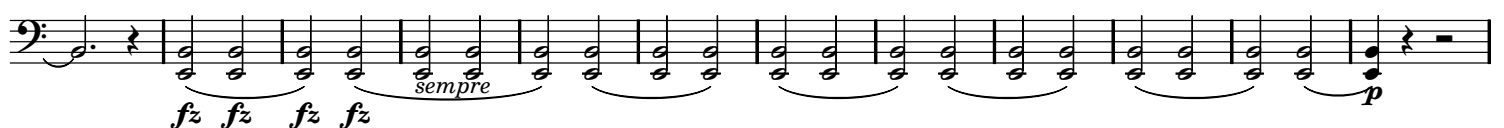
48



57



67



89

96

103

113

121

Poco adagio cantabile.

10

The bass line of 'The Rose Tree' is written in G major (one sharp) and 2/4 time. It consists of 12 measures. The notes are: G2 (quarter), A2 (quarter), B2 (quarter), C3 (quarter), D3 (quarter), E3 (quarter), F#3 (quarter), G3 (quarter), A3 (quarter), B3 (quarter), C4 (quarter), and D4 (quarter). The dynamics are: *fz* (first measure), *fz* (second measure), *p* (third measure), *fz* (fourth measure), *fz* (fifth measure), and *p* (sixth measure). The melody is written in the treble clef and consists of 12 measures. The notes are: G4 (quarter), A4 (quarter), B4 (quarter), C5 (quarter), D5 (quarter), E5 (quarter), F#5 (quarter), G5 (quarter), A5 (quarter), B5 (quarter), C6 (quarter), and D6 (quarter). The dynamics are: *fz* (first measure), *fz* (second measure), *p* (third measure), *fz* (fourth measure), *fz* (fifth measure), and *p* (sixth measure).

Var. I

19

19

Var. II

[illegible]

51

1

Musical score for the first system of 'The Little Boat'. The key signature is one sharp (F#). The melody is written in a single staff with a treble clef. It begins with a quarter note G4, followed by an eighth note A4, and then a series of eighth and sixteenth notes. There are two dynamic markings, *fz*, under the staff. The system ends with a double bar line and a common time signature 'C'.

Var. III



74



Var. IV



93



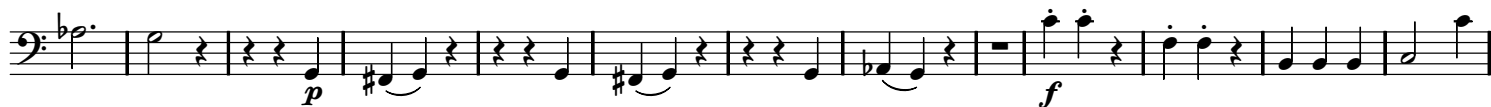
Menuetto.



13



25



38



50

Trio.



65



84



Finale: presto.

Violoncello

f *p* *f* *p*

13

26

fz *p*

39

f *fz*

51

fz

63

72

f *p*

83

f

97

107

113

123



140



150



160



172



183

