

String Quartet nr. 18 in E minor

for 2 violins, viola and cello

GAETANO DONIZETTI (1797-1848)
Maurizio Tomasi

Allegro.

Violino II.

6

11

15

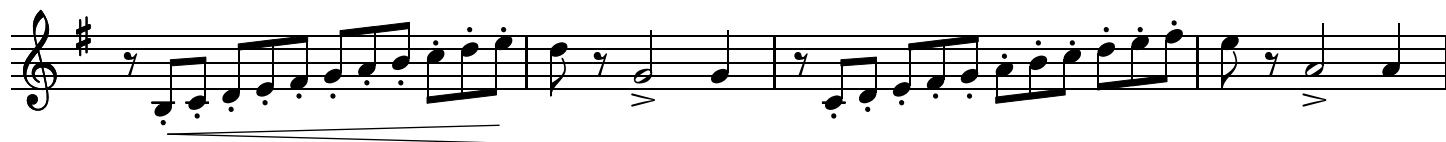
19

22

25

28

31



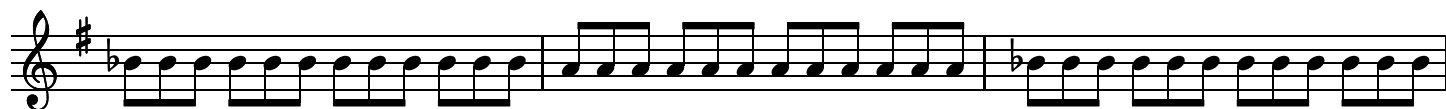
35



39



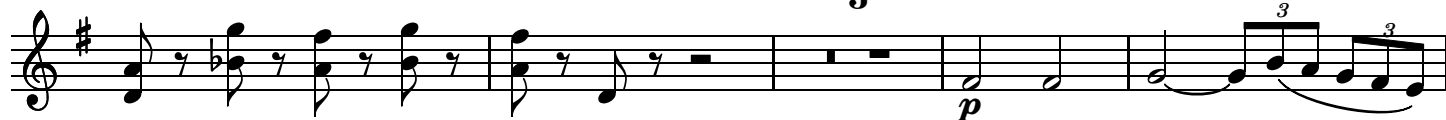
42



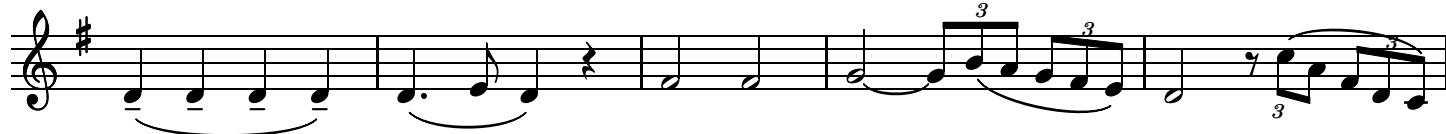
45



49



56



61



66



73 *f* *f*

77 *f*

81 *p*

88 *cresc.*

93 *f* *p*

100 *rall. poco* 1.

105 2.

113 *f*

117 *fp* *p*

120



123



127



130



133



136



140



145



149



152

155

162

167

171

175

178

181

185

193

2

f

200

2

3

3

207

2

213

3

3

218

3

3

3

3

3

f

222

3

3

3

sf

226

p

233

3

3

3

3

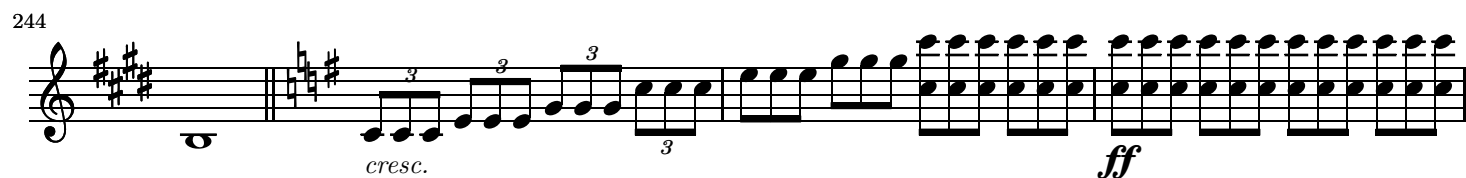
ff

238

p

Detailed description of the musical score: The score consists of nine staves of music. Measure 193 starts with a half note G#4, followed by eighth notes A4, B4, and C#5, then a quarter rest. Measure 194 has a half note D5, followed by eighth notes C#5, B4, and A4, then a quarter rest. Measure 195 has a half note G#4, followed by eighth notes A4, B4, and C#5, then a quarter rest. Measure 196 has a half note F#4, followed by eighth notes G#4, A4, and B4, then a quarter rest. Measure 197 has a half note E4, followed by eighth notes F#4, G#4, and A4, then a quarter rest. Measure 198 has a half note D4, followed by eighth notes E4, F#4, and G#4, then a quarter rest. Measure 199 has a half note C#4, followed by eighth notes D4, E4, and F#4, then a quarter rest. Measure 200 has a half note B3, followed by eighth notes C#4, D4, and E4, then a quarter rest. Measure 201 has a half note A3, followed by eighth notes B3, C#4, and D4, then a quarter rest. Measure 202 has a half note G#3, followed by eighth notes A3, B3, and C#4, then a quarter rest. Measure 203 has a half note F#3, followed by eighth notes G#3, A3, and B3, then a quarter rest. Measure 204 has a half note E3, followed by eighth notes F#3, G#3, and A3, then a quarter rest. Measure 205 has a half note D3, followed by eighth notes E3, F#3, and G#3, then a quarter rest. Measure 206 has a half note C#3, followed by eighth notes D3, E3, and F#3, then a quarter rest. Measure 207 has a half note B2, followed by eighth notes C#3, D3, and E3, then a quarter rest. Measure 208 has a half note A2, followed by eighth notes B2, C#3, and D3, then a quarter rest. Measure 209 has a half note G#2, followed by eighth notes A2, B2, and C#3, then a quarter rest. Measure 210 has a half note F#2, followed by eighth notes G#2, A2, and B2, then a quarter rest. Measure 211 has a half note E2, followed by eighth notes F#2, G#2, and A2, then a quarter rest. Measure 212 has a half note D2, followed by eighth notes E2, F#2, and G#2, then a quarter rest. Measure 213 has a half note C#2, followed by eighth notes D2, E2, and F#2, then a quarter rest. Measure 214 has a half note B1, followed by eighth notes C#2, D2, and E2, then a quarter rest. Measure 215 has a half note A1, followed by eighth notes B1, C#2, and D2, then a quarter rest. Measure 216 has a half note G#1, followed by eighth notes A1, B1, and C#2, then a quarter rest. Measure 217 has a half note F#1, followed by eighth notes G#1, A1, and B1, then a quarter rest. Measure 218 has a half note E1, followed by eighth notes F#1, G#1, and A1, then a quarter rest. Measure 219 has a half note D1, followed by eighth notes E1, F#1, and G#1, then a quarter rest. Measure 220 has a half note C#1, followed by eighth notes D1, E1, and F#1, then a quarter rest. Measure 221 has a half note B0, followed by eighth notes C#1, D1, and E1, then a quarter rest. Measure 222 has a half note A0, followed by eighth notes B0, C#1, and D1, then a quarter rest. Measure 223 has a half note G#0, followed by eighth notes A0, B0, and C#1, then a quarter rest. Measure 224 has a half note F#0, followed by eighth notes G#0, A0, and B0, then a quarter rest. Measure 225 has a half note E0, followed by eighth notes F#0, G#0, and A0, then a quarter rest. Measure 226 has a half note D0, followed by eighth notes E0, F#0, and G#0, then a quarter rest. Measure 227 has a half note C#0, followed by eighth notes D0, E0, and F#0, then a quarter rest. Measure 228 has a half note B0, followed by eighth notes C#0, D0, and E0, then a quarter rest. Measure 229 has a half note A0, followed by eighth notes B0, C#0, and D0, then a quarter rest. Measure 230 has a half note G#0, followed by eighth notes A0, B0, and C#0, then a quarter rest. Measure 231 has a half note F#0, followed by eighth notes G#0, A0, and B0, then a quarter rest. Measure 232 has a half note E0, followed by eighth notes F#0, G#0, and A0, then a quarter rest. Measure 233 has a half note D0, followed by eighth notes E0, F#0, and G#0, then a quarter rest. Measure 234 has a half note C#0, followed by eighth notes D0, E0, and F#0, then a quarter rest. Measure 235 has a half note B0, followed by eighth notes C#0, D0, and E0, then a quarter rest. Measure 236 has a half note A0, followed by eighth notes B0, C#0, and D0, then a quarter rest. Measure 237 has a half note G#0, followed by eighth notes A0, B0, and C#0, then a quarter rest. Measure 238 has a half note F#0, followed by eighth notes G#0, A0, and B0, then a quarter rest.

244



cresc. *ff*

248



252



tr *tr* *ff*

256



259



fp *p* *f* *f*

264



f

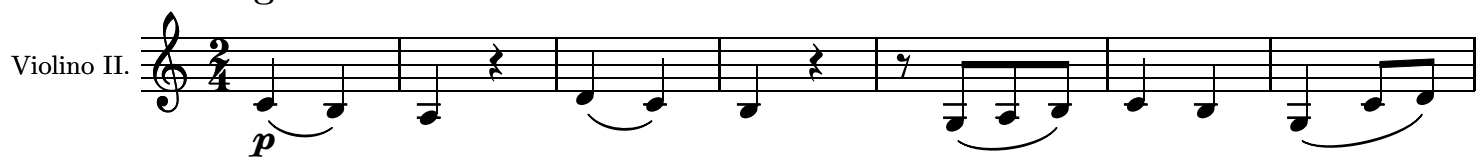
267



f

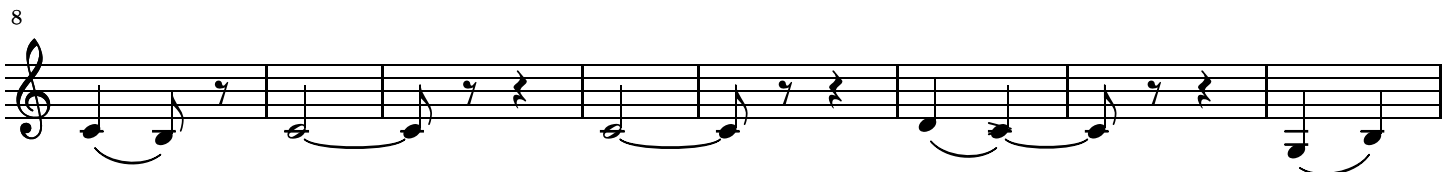
Adagio.

Violino II.



p

8



22

Musical notation for measure 22, featuring a complex sequence of eighth and sixteenth notes, including triplets and a final quarter rest.

27



34

Example 10 (continued)

41

Musical notation for measure 41, featuring a treble clef, a key signature of one sharp (F#), and a 3/4 time signature. The melody consists of eighth and sixteenth notes, with some beamed sixteenth notes and a final quarter rest.

45

[illegible]

55

55

60

60

f

65

70

74

82

88

92

96

101

106

cresc.

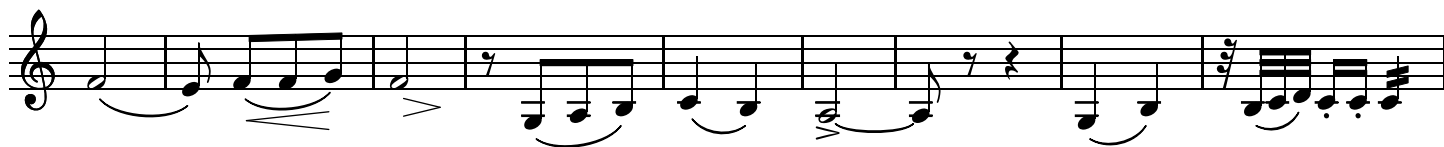
f

p

113



120



129



Minuetto.
Presto

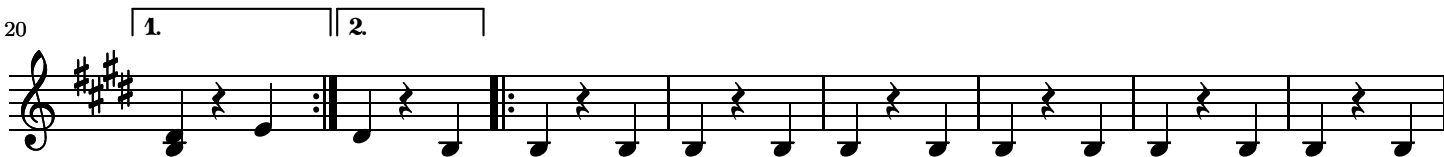
Violino II.



9



20



28



36



44



Mutopia-2003/08/01-342

127 2.

134

141

149

156 1. 2.

f

Allegro giusto.

D.C. il Minuetto al Fine

Violino II.

f *p*

5

8

11 2

16



19



22



26



29



33



38



41

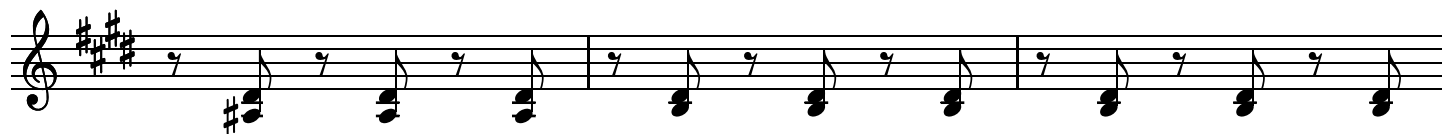


44



14

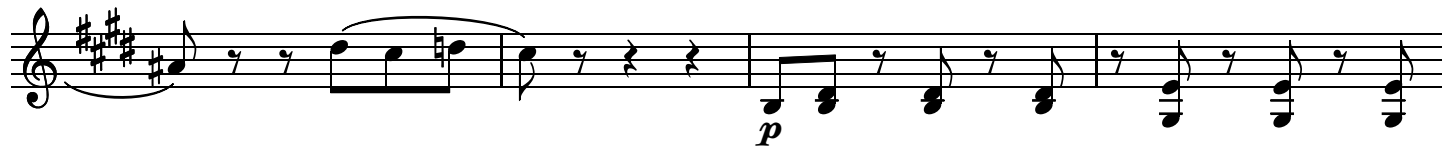
47



50



53



57



60



63



67



71



74



78 2

86 2

91

94

97

100

103

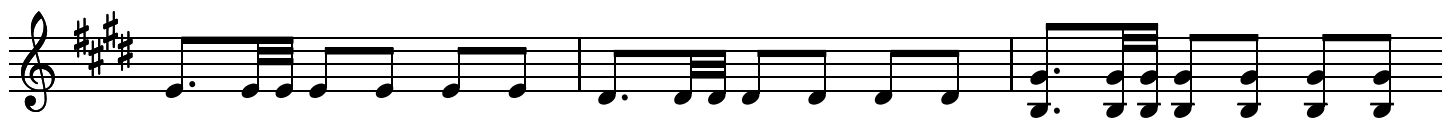
106

112 5

120



123



126



131



134



137



140

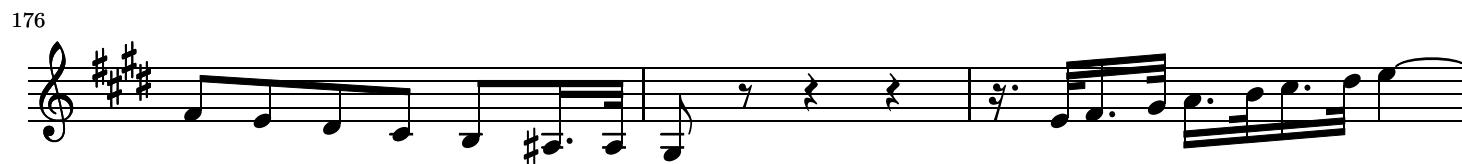
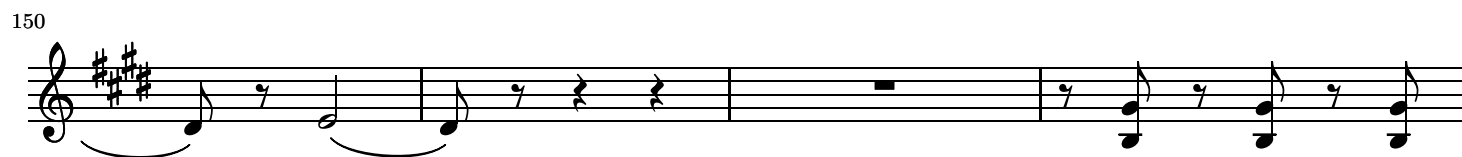


143



147





182

185

189

192

195

198

206

209

213

f

p

cresc. poco

cresc.

2

