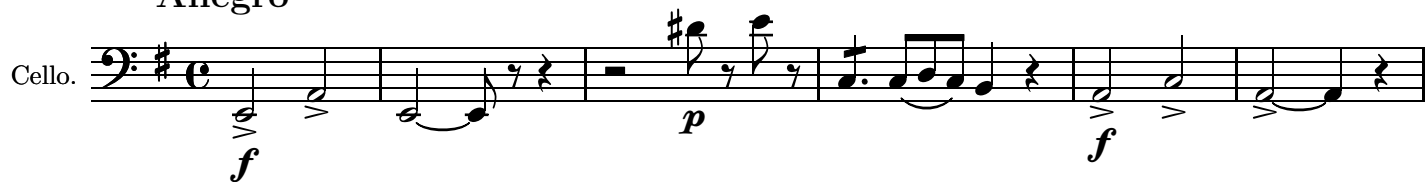


# String Quartet nr. 18 in E minor

for 2 violins, viola and cello

Allegro

GAETANO DONIZETTI (1797-1848)



2

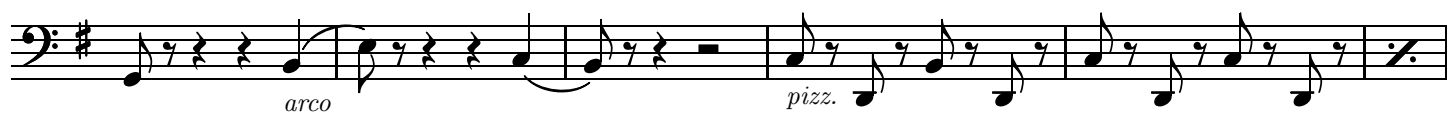
53



58



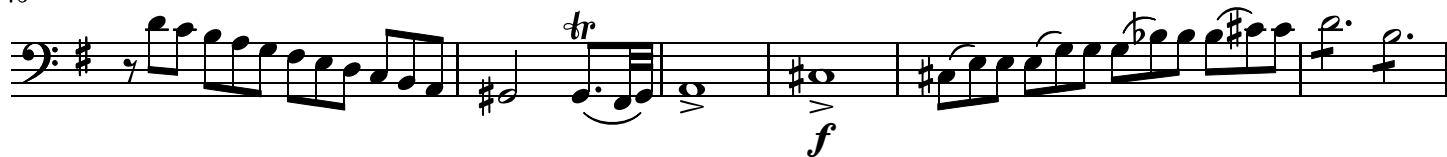
63



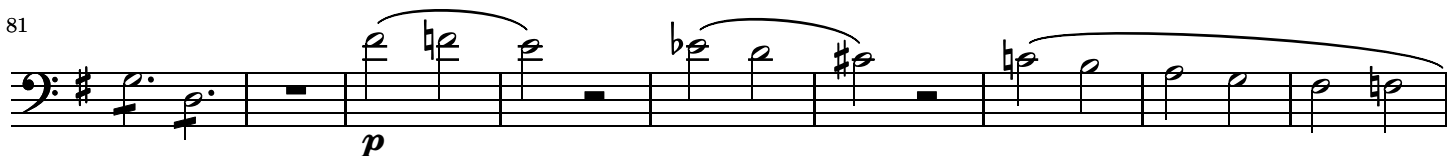
69



75



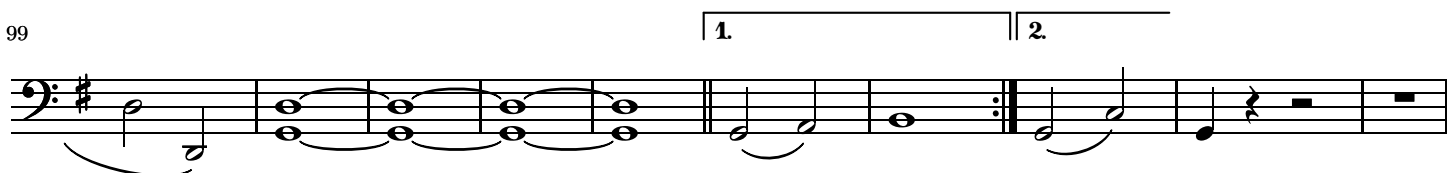
81



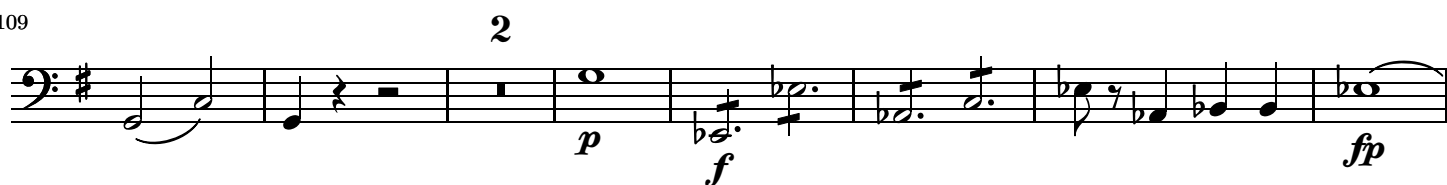
90



99



109



118



126



132



141



147



153



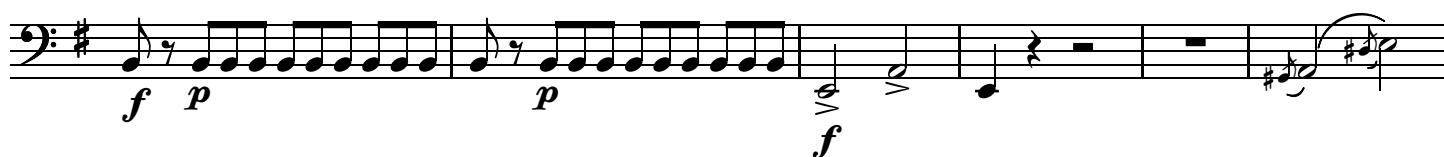
158



164



171



183

187

193

198

202

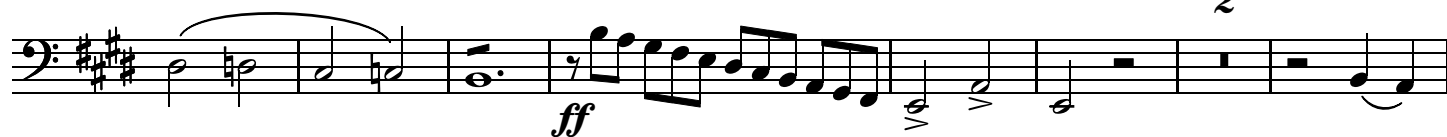
207

213

218

225

234



243



250



256



261



266



## ADAGIO

Cello.



13

15



38



46



6

56



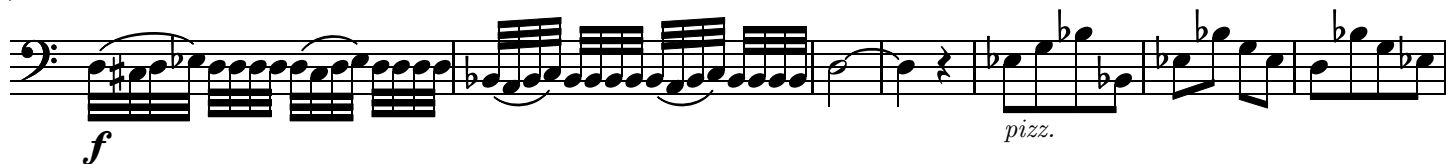
61



65



71



78



87



93



103



110



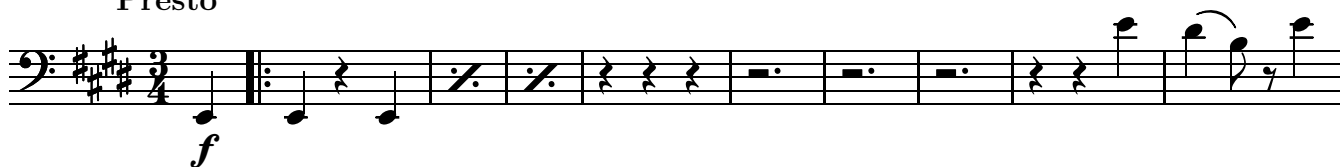
119



# MINUETTO

## Presto

Cello.



10



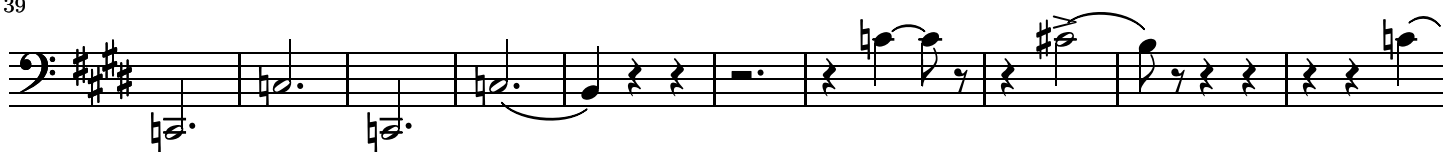
20



28



39



49



58



70



80



90

1. 2. Trio.

*f* *p* FINE

99

111

*p*

123

1. 2.

133

144

155

1. 2.

*f*

ALL. GIUSTO *D.C. il Minuetto al Fine*

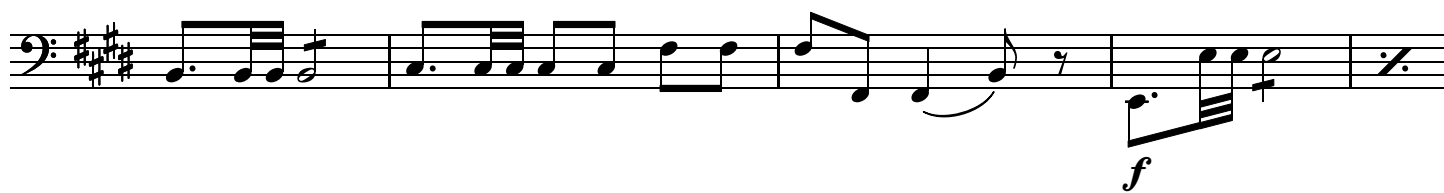
Cello.

*f* *f p*

5



9



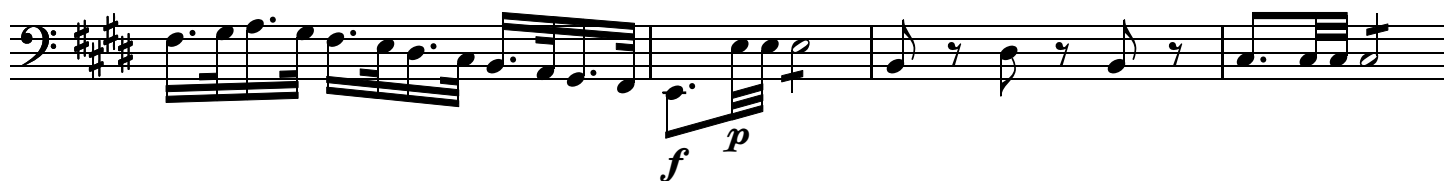
14



19



23



27



31



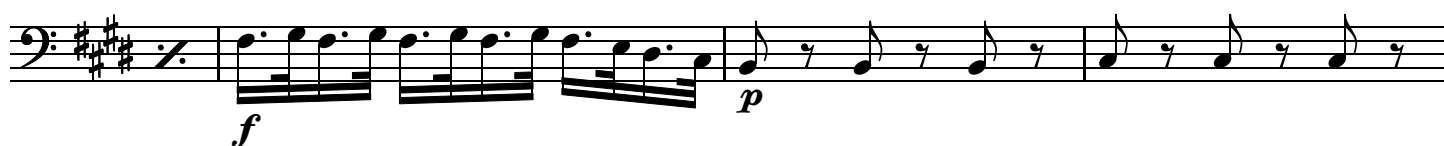
35



38



43



10

47



50



54



57



60



63



68



71



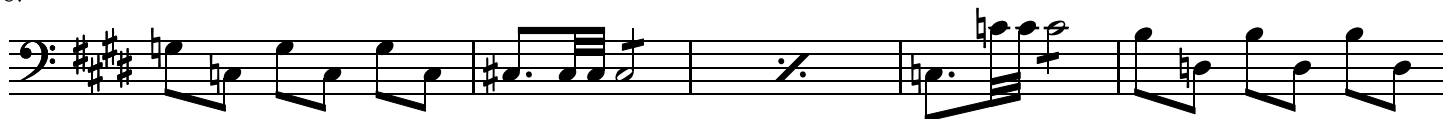
75



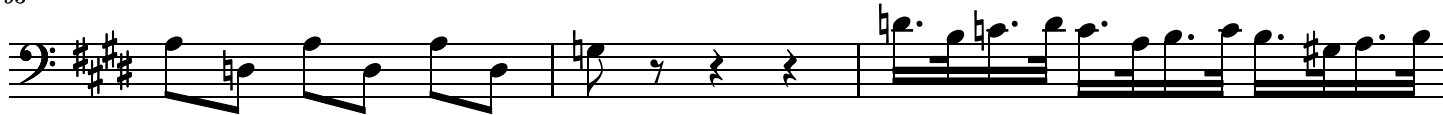
82



87



93



96



99



103



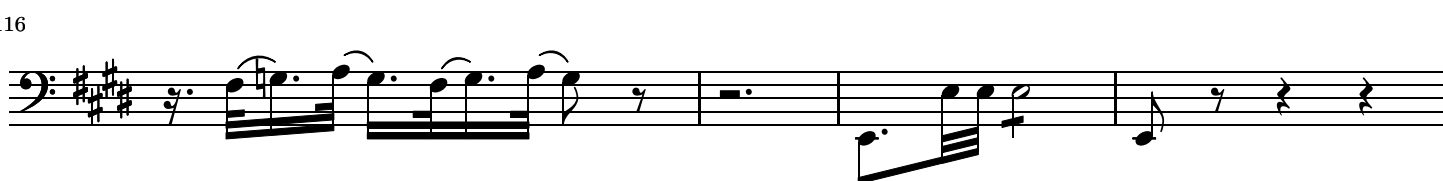
106



111



116



120



124



128

128

133

The bass line of 'The Rose Tree' is written in G major (one sharp) and 2/4 time. It consists of four measures. The first measure contains a half note G2, a quarter rest, a half note G2, a quarter rest, a half note G2, and a quarter rest. The second measure contains a half note G2, a quarter note G2, a half note G2, and a quarter note G2. The third measure contains a half note G2, a quarter rest, a half note G2, a quarter rest, a half note G2, and a quarter rest. The fourth measure contains a half note G2, a quarter note G2, a half note G2, and a quarter note G2.

137

[illegible]

141

144

[illegible]

147

The bass line of 'The Rose Tree' is written on a single staff in bass clef with a key signature of three sharps (F#, C#, G#). The melody consists of two measures. The first measure contains a half note G2, a quarter note F#2, a quarter note E2, a quarter note D2, and a half note C2, all beamed together. The second measure contains a half note B1, a quarter note A1, a quarter note G1, a quarter note F#1, a quarter note E1, a quarter note D1, and a half note C1, all beamed together.

152

156

The musical notation for the bass staff shows three measures. The first measure contains three eighth notes: G2, F#2, and E2, each followed by a quarter rest. The second measure contains three eighth notes: D2, C#2, and B1, each followed by a quarter rest. The third measure contains three eighth notes: A1, G#1, and F#1, each followed by a quarter rest. The key signature has four sharps (F#, C#, G#, D#) and the time signature is 4/4.

159

163

Musical notation for the bass line of "The Rose Tree" in G major, 3/4 time. The key signature has two sharps (F# and C#). The melody consists of eighth and quarter notes with rests.

166



169



170



174



177



181



188



191



194



201



14

207



211



215

