

Ouvertüre

Zu Heinrich Joseph v. Collins Trauerspiel

Coriolan

LUDWIG VAN BEETHOVEN (1770-1827)

Op. 62

Clarinet

Allegro con brio

2 3 3

ff

12 4 *I.* 13

p cresc. *ff*

34 *ff* *a2* *sf*

41 *sf sf sf sf sf sf sf*

49 5 *I.* *sf p cresc.*

61 *ff p cresc. ff* *a2*

71 11 *a2 a2 I.* *p ff*

89 *sf sf sf*

95

sf *a2*

102

p *f* *f* *f* *a2*

111

118

p *3* *I.*

126

3 *2* *cresc*

135

5 *a2* *4*

148

ff *a2* *a2*

153

ff *3* *sf* *sf* *3* *ff*

164

2 *sf* *ff* *sf* *sf* *sf* *sf* *sf* *sf*

173

9

sf sf sf *p cresc.-----ff* *a2*

This staff contains measures 173 to 188. It begins with three measures of eighth-note chords, each marked *sf*. After a whole rest, a 9-measure rest is indicated. The staff then continues with a series of chords and a final melodic line marked *a2*. The dynamic marking *p cresc.-----ff* spans the final measures.

189

5

pp ff p *I.*

This staff contains measures 189 to 200. It starts with a *pp* dynamic, followed by a *ff* dynamic. A 5-measure rest is indicated. The staff concludes with a melodic line marked *I.* and a *p* dynamic.

201

f p

This staff contains measures 201 to 207. It begins with a melodic line marked *f*, which then transitions to a *p* dynamic. The staff includes several rests and a final melodic phrase.

208

cresc.-----ff

This staff contains measures 208 to 213. It features a melodic line that starts with a *cresc.* marking and ends with a *ff* dynamic. The staff includes several rests and a final melodic phrase.

214

ff sf *a2*

This staff contains measures 214 to 220. It begins with a *ff* dynamic, followed by a melodic line marked *a2*. The staff includes several rests and a final melodic phrase.

221

sf sf sf *a2*

This staff contains measures 221 to 228. It begins with three measures of eighth-note chords, each marked *sf*. The staff concludes with a melodic line marked *a2*.

229

p f f *3*

This staff contains measures 229 to 237. It begins with a *p* dynamic, followed by two measures marked *f*. A 3-measure rest is indicated. The staff concludes with a melodic line.

238

f *11* *I.* *p cresc.-----*

This staff contains measures 238 to 253. It begins with a melodic line marked *f*. A 11-measure rest is indicated. The staff concludes with a melodic line marked *I.* and a *p cresc.-----* marking.

254

a2 f p f p f p cresc.-----

This staff contains measures 254 to 263. It begins with a melodic line marked *a2*. The staff includes several rests and a final melodic phrase. The dynamic markings *f p f p f p cresc.-----* are present.

264



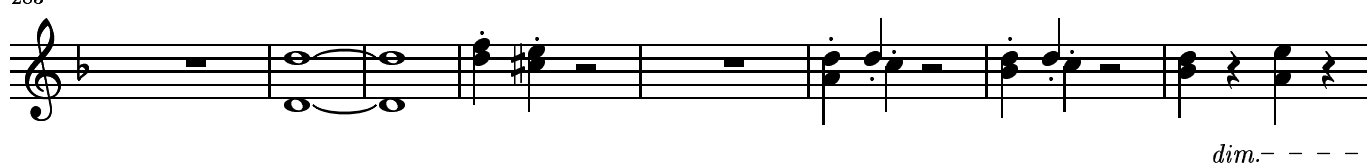
269



275



283



291

