

# Symphony No. 3 in E $\flat$ Major

Eroica

Violin I

Ludwig van Beethoven (1770-1827)

Op. 55

Allegro con brio ( $\text{♩} = 60$ )

*f* *p cresc.* *sf > p*

13 *cresc.* *p* *p* *cresc. ff*

25 *sf sf sf fp sf sf sf sf sf sf sf sf sf* **A**

35 *cresc.* *ff sf sf*

46 *p p ff p < >* **B**

59 *cresc.* *f*

67

73

80 *ff p cresc. sf* **C**

91 *p* **4** *pp* **D**

105 *cresc.* *f* *sf* *sf* *sf* *ff*

114 *sf* *sf* *sf* *sf*

122 *sf* *sf* *sf* *sf* *sf* *sf*

132 **E** *sfp* *sfp* *cresc.*

142 *ff* *f* *f* *f* *fp* *p*

152 **1.** *sfp* **2.** *pp*

164 *cresc.* *sf* *p* *sfp*

175 *sfp* *pp*

185 **F** *cresc. p* *cresc. ff*

Detailed description: This is a page of a musical score for Violin I, measures 91 to 185. The key signature has two flats (B-flat and E-flat). The score is written on a single staff. It includes various musical notations such as rests, notes, slurs, and dynamic markings. Measure 91 starts with a piano (*p*) dynamic and a first ending bracket labeled '4'. Measure 105 features a crescendo (*cresc.*) and a series of dynamics: *f*, *sf*, *sf*, *sf*, and *ff*. Measure 114 has four *sf* markings. Measure 122 has six *sf* markings. Measure 132 is marked with a box 'E' and includes *sfp*, *sfp*, and *cresc.* markings. Measure 142 includes *ff*, *f*, *f*, *f*, *fp*, and *p* markings. Measure 152 has a first ending bracket labeled '1.' and a second ending bracket labeled '2.', with *sfp* and *pp* dynamics. Measure 164 includes *cresc.*, *sf*, *p*, and *sfp* markings. Measure 175 includes *sfp* and *pp* markings. Measure 185 is marked with a box 'F' and includes *cresc. p* and *cresc. ff* markings.

193 *p*

199 *cresc.* *ff*

205 *p*

212 *cresc.* *p* *cresc.* *f*

220 *ff* *sf* **G**

229 *sf*

238 *sf* *sf* *cresc.* *sf*

249 *sf* *sf* *sf* *ff* *sf* *sf* *sf* *sf* *sf* *sf* *sf* *sf* **H**

259 *sf* *sf* *sf* *sf* *sf* *sf* *sf* *sf* *sf* *sf* *sf* *sf* *sf*

268 *sf* *sf* *sf* *sf* *sf* *sf* *sf* *sf* *sf* *sf* *sf* *sf* *sf* *sf* *sf*

278 *sf sf sf f f f f f f* **I** *f* *decresc.* *p*

288 *cresc.*

296 *p sf sf sf* *cresc.* *f*

305 *sf sf*

314 *sf sf sf*

323 **K** *ff fp* *decresc.*

332 *cresc.* *p*

341 *p sfp sfp*

353 *sfp sfp cresc. sf sempre cresc.*

365 **L** *sf ff* *f* *p* *decresc.*

379 *pizz.* *arco* *pizz.*  
*pp*

389 *arco* *pizz.* *arco*  
*pp* *pp* *ppp* *f*

401 **M** *ff* *p cresc.* *sf > p* *tr*

415 *cresc.* *p* *pizz.*

426 *arco* *cresc.* *decresc.* *pp* *cresc.* *f*

436 *sf* *più f* *ff sf sf*

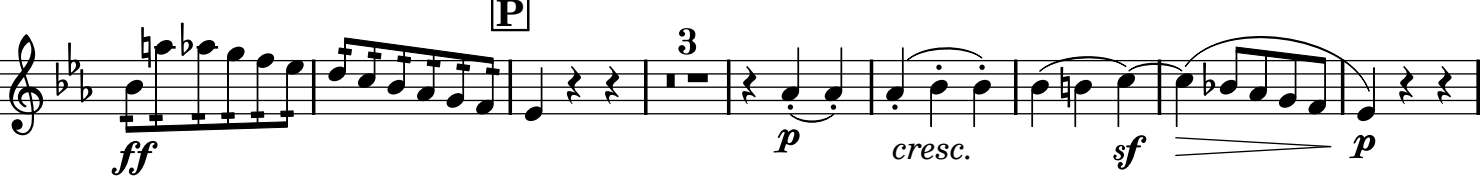
446 *sf* *sf* **N** *p* *2*

457 *2* *ff* *p < >*

468 *cresc.* *f* **O**

475

481  *cresc.*

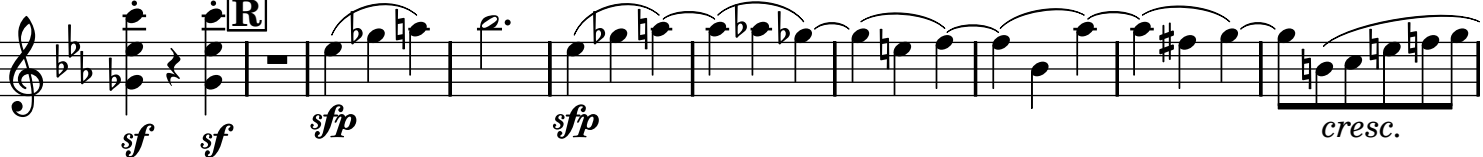
488  *ff* *p* *cresc.* *sf* *p*

499  *pp*


512  *cresc.* *f* *sf* *sf* *sf* *ff*


521  *sf* *sf* *sf* *sf*

529  *ff* *sf* *sf* *sf* *sf*

538  *sf* *sf* *sfp* *sfp* *cresc.*

548  *ff* *f* *f* *f* *fp* *decresc.*

558  *pp* *f* *p* *ff* *p* *decresc.*

571  *pp*

578

585

594

603

613

624

632

638

645

655

665

*cresc.* *p*

*decresc.* *pp*

*cresc.* *cresc.*

*decresc.* *p* *cresc.*

*p* *sf*

*sf*

*f*

*sf sf sf ff*

**T**

**U**

**V**

**T**

**U**

**V**

677 **W**

*p* *cresc.* *f f*

686 *f f f f ff*

## Marcia funebre

Adagio assai (♩ = 80)

*pp* *sf*

7 *cresc.* *decresc.* *p*

12 *cresc.* *decresc.* *p*

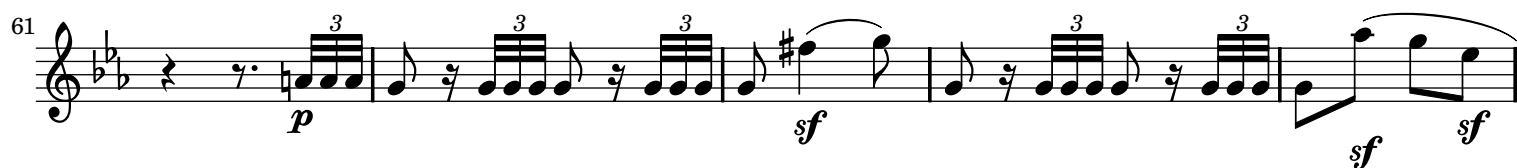
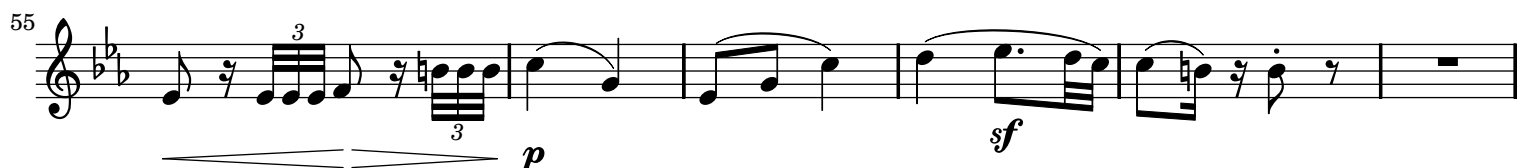
17 **A** *cresc.* *f* *p* *sf* *p*

24 *sf* *p*

33 *cresc.* *f* *p cresc. sf* *p*

39 *cresc.* *f* *p*





94 *f* *sempre più f* *ff*

99 *fp* *cresc.* *p*

105 **Minore** *sotto voce* *p*

112 *sf* *p* *f* *sf* *sf* *sf*

120 *sf* *sf*

125 *sf* *ff* *sf*

132 *sf*

139 *sf*

146 *sf* *sf* *decresc.*

Violin I musical score, measures 153-202. The score is written in treble clef with a key signature of two flats (B-flat and E-flat). The music features various dynamics, articulations, and technical markings.

Measures 153-161: Measure 153 starts with a *p* dynamic. Measure 154 has a *ff* dynamic. Measures 155-161 include sixteenth-note patterns and triplets.

Measures 162-171: Measure 162 has a *p* dynamic. Measures 163-171 include sixteenth-note patterns and triplets. Measure 168 has a *decresc.* marking.

Measures 172-181: Measure 172 has a *p* dynamic. Measures 173-181 include sixteenth-note patterns and triplets. Measure 178 has a *cresc.* marking. Measure 181 has a *decresc.* marking.

Measures 182-191: Measure 182 has a *p* dynamic. Measures 183-191 include sixteenth-note patterns and triplets. Measure 188 has a *cresc.* marking. Measure 191 has a *f* dynamic.

Measures 192-201: Measure 192 has a *cresc.* marking. Measures 193-201 include sixteenth-note patterns and triplets. Measure 198 has a *f* dynamic. Measure 201 has a *p* dynamic.

Measures 202-211: Measure 202 has a *sf* dynamic. Measures 203-211 include sixteenth-note patterns and triplets. Measure 208 has a *sf* dynamic. Measure 211 has a *sf* dynamic.

Technical markings include triplets, sixteenth-note patterns, and various dynamics (*p*, *ff*, *cresc.*, *f*, *sf*, *decresc.*). Measure 172 is marked with a box containing the letter 'F'. Measure 192 is marked with a box containing the letter 'G'.

206 *p* *cresc.*

209 **H** *f* *p* *pp*

216 *sf* *sf cresc.*

221 *decresc.* *pp* *pp* *cresc.*

227 *p cresc. p*

233 *cresc.*

237 *decresc.* *sotto voce* *sempre più p*

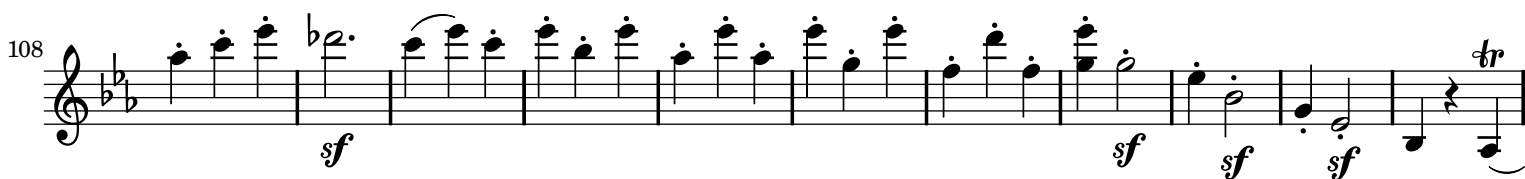
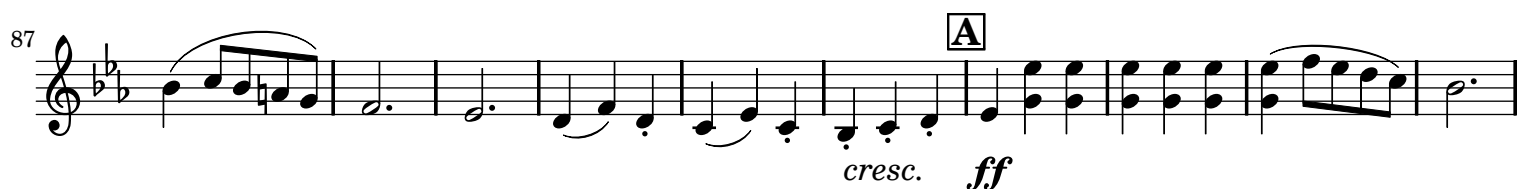
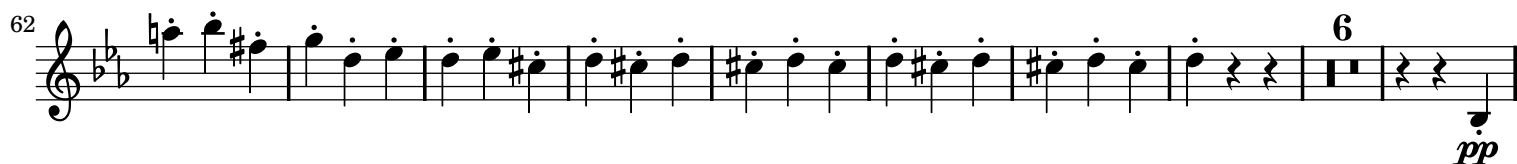
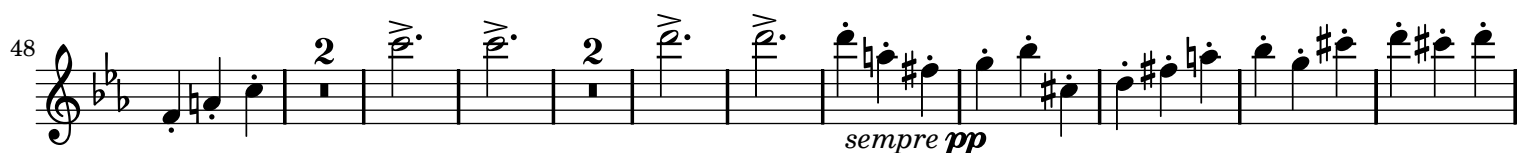
242 *pp* *f* *p*

## Scherzo

**Allegro vivace** (♩ = 116)

*pp* *sempre pianissimo e staccato*

9 *sempre staccato*



131 *p* *p* *p*

143 *p*

152 *cresc.* *ff*

161 *f* *f* *f* *p* *f* *f* *f* **Trio**

171 6 *p* 6 *p* 6 *p* 5 *p* *f*

202 10 *p*

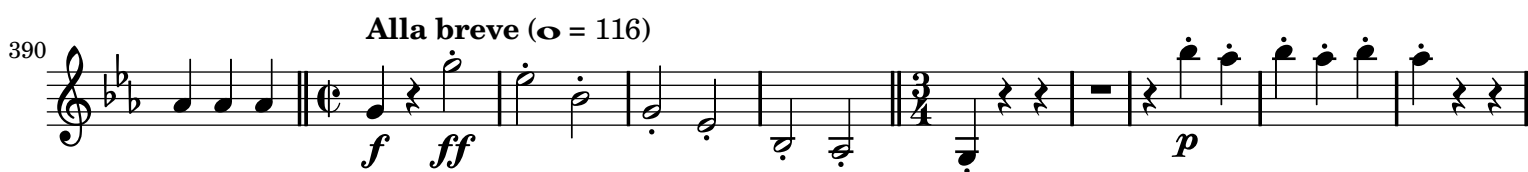
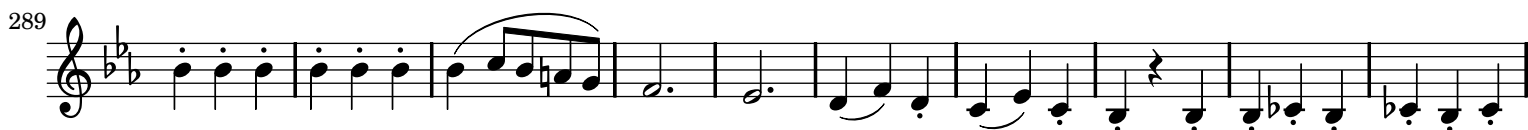
221 *cresc.* *f* 5 *p*

236 6 *p* *sf* 3 *pp*

255 2 3 *pp* *f* *pp*

269 *pp* *sempre staccato*

279







Violin I musical score, page 17. The score consists of ten staves of music in G minor (three flats). It includes various dynamics such as *cresc.*, *p*, *f*, *sf*, and *dolce*, as well as articulation like slurs and accents. A section labeled **A** is marked at measure 106.

Measures 1-64: *cresc.*, *p*, *p dolce*

Measures 65-76: *cresc.*, *p*, *f*, *p*, *cresc.*

Measures 77-82: *p*, *cresc.*

Measures 83-91: *sf*, *decresc.*, *p*, *f*, *sf*

Measures 92-98: *p*, *f* *decresc.*, *p*

Measures 99-105: *f*, *f*

Measures 106-114: **A**, *p*, *sf*, *sf*, *cresc.*

Measures 115-125: *f*, *ff*, *p*

Measures 126-134: *sf*, *sf*, *sf*

152 *sf*

162 *sf* *più f*

173 **B** *ff* *p* *cresc.* *sf* *p*

184

189 *cresc.* *p*

194

199 *sf* *sf* *sf* *sf*

205 *sf* *cresc.* *ff*

212 **C** *sempre f*

220

Detailed description: This is a page of a musical score for Violin I, containing measures 152 through 220. The music is written on a single staff in treble clef with a key signature of two flats (B-flat and E-flat). The score includes various musical notations such as eighth notes, sixteenth notes, triplets, and slurs. Dynamic markings are prominently featured, including *sf* (sforzando), *ff* (fortissimo), *p* (piano), *cresc.* (crescendo), and *sempre f* (always forte). There are two section markers, 'B' and 'C', enclosed in boxes. Measure 152 begins with a *sf* marking. Measure 162 has *sf* and *più f*. Measure 173 starts with *ff*, followed by *p*, *cresc.*, *sf*, and *p*. Measure 199 features four *sf* markings. Measure 205 includes *sf*, *cresc.*, and *ff*. Measure 212 is marked *sempre f*. The score concludes with measure 220.

228 *sf sf sf sf sf sf sf*

240 *sf sf*

249 *p* **D**

259 *dolce cresc. sf > p pp*

269

277 *pp*

284

291 *cresc.* 5

303 *f sf sf* **E**

313 *ff sf*

324

335

344 *Poco Andante* (♩ = 108)

362 *cresc. sf > p*

370 *cresc. p < > cresc. p*

377 *cresc. p < > p ff*

383 **F**

388 *sf*

396 **G** *p cresc.*

402 *p cresc. p*

409 *cresc.* *cresc.* *f* *sempre più f*

419 6 6 6 6 6 6 *p* *cresc.* *decresc.*

427 *p* *decresc.* *pp* *ff* **Presto** (♩ = 116)

434

440

447 *sf* *sf* *sf* *sf* *sf* *sf*

453 *sf* *sf* *sf* *sf* *sf* *sf*

458 *sf* *sf* *sempre più f* *ff*

467