

Keyboard partita in E minor

Johann Sebastian Bach

5. Tempo di Gavotta

BWV 830

The image displays the musical score for the fifth movement, 'Tempo di Gavotta', from Johann Sebastian Bach's Keyboard Partita in E minor, BWV 830. The score is written for a single melodic line on a grand staff (treble and bass clefs) in E minor (one sharp, F#). The time signature is common time (C). The piece consists of 12 measures. The first system (measures 1-3) features a treble staff with eighth-note patterns and a bass staff with a more active line, including a triplet in measure 3. The second system (measures 4-6) continues the melodic development in the treble and provides harmonic support in the bass. The third system (measures 7-9) shows a more active bass line with eighth-note patterns. The fourth system (measures 10-12) concludes the piece with a repeat sign and two endings. The first ending (marked '1.') leads back to the beginning of the piece, while the second ending (marked '2.') provides a final cadence. The score is presented in a clear, black-and-white format with standard musical notation.

15

Measures 15-17 of a musical score in G major (one sharp). The treble clef staff contains eighth-note and quarter-note patterns with various accidentals. The bass clef staff features a more melodic line with dotted rhythms and slurs. The key signature is G major.

18

Measures 18-20 of a musical score in G major. The treble clef staff continues with eighth-note and quarter-note patterns. The bass clef staff has a melodic line with dotted rhythms and slurs. The key signature is G major.

21

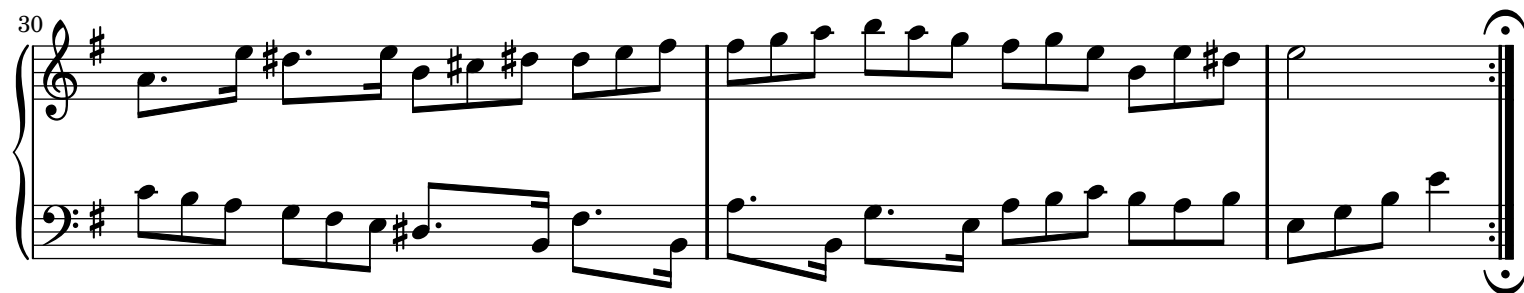
Measures 21-23 of a musical score in G major. The treble clef staff includes a triplet of eighth notes in measure 22. The bass clef staff continues with a melodic line and slurs. The key signature is G major.

24

Measures 24-26 of a musical score in G major. The treble clef staff features eighth-note and quarter-note patterns. The bass clef staff has a melodic line with dotted rhythms and slurs. The key signature is G major.

27

Measures 27-29 of a musical score in G major. The treble clef staff contains eighth-note and quarter-note patterns. The bass clef staff has a melodic line with dotted rhythms and slurs. The key signature is G major.



Sheet music from www.MutopiaProject.org • *Free* to download, with the *freedom* to distribute, modify and perform.

Typeset using www.LilyPond.org by Steven McDougall. Reference: Mutopia-2008/07/30-1497

This sheet music has been placed in the public domain by the typesetter, for details see: <http://creativecommons.org/licenses/publicdomain>