

Partita II

Clavierübung part I

J. S. Bach

BWV 826

2. Allemande

The image displays the musical score for the second Allemande from Partita II, BWV 826, by Johann Sebastian Bach. The score is written for a single melodic line on a grand staff, consisting of a treble and a bass clef. The key signature is two flats (B-flat and E-flat), and the time signature is common time (C). The piece is in 3/4 time. The score is divided into four systems, each containing two staves. The first system shows the beginning of the piece with a treble staff starting on a G4 and a bass staff starting on a G3. The second system features a treble staff with a triplet of eighth notes and a bass staff with a triplet of eighth notes. The third system shows a treble staff with a triplet of eighth notes and a bass staff with a triplet of eighth notes. The fourth system shows a treble staff with a triplet of eighth notes and a bass staff with a triplet of eighth notes. The score is written in a clear, legible font, with notes and rests clearly visible. The overall layout is clean and professional, typical of a printed musical score.

10

Measures 10 and 11 of a musical score in B-flat major (two flats). The treble clef staff features a melody with eighth and sixteenth notes, including a trill in measure 10 and a sharp sign in measure 11. The bass clef staff provides a harmonic accompaniment with eighth and sixteenth notes. A sharp sign is present at the end of measure 11.

12

Measures 12 and 13. Measure 12 continues the melodic and harmonic patterns. Measure 13 features a more active bass line with eighth notes and a sharp sign. The treble staff has a slur over the final two notes.

14

Measures 14 and 15. Measure 14 has a slur in the treble staff. Measure 15 features a sharp sign in the bass staff and a slur in the treble staff.

16

Measures 16 and 17. Measure 16 includes a repeat sign (double bar line with dots) in both staves. Measure 17 continues the melody and accompaniment.

18

Measures 18 and 19. Measure 18 features a sharp sign in the bass staff. Measure 19 includes a flat sign (b) in the treble staff and a sharp sign in the bass staff.

20

Measures 20-21 of a piano piece in B-flat major. Measure 20 features a treble staff with eighth-note runs and a bass staff with a steady eighth-note accompaniment. Measure 21 continues the treble staff's melodic line with some grace notes and maintains the bass staff's accompaniment.

22

Measures 22-23. Measure 22 shows a more active treble staff with sixteenth-note passages and a bass staff with a simple eighth-note line. Measure 23 features a treble staff with a descending melodic line and a bass staff with a few chords.

24

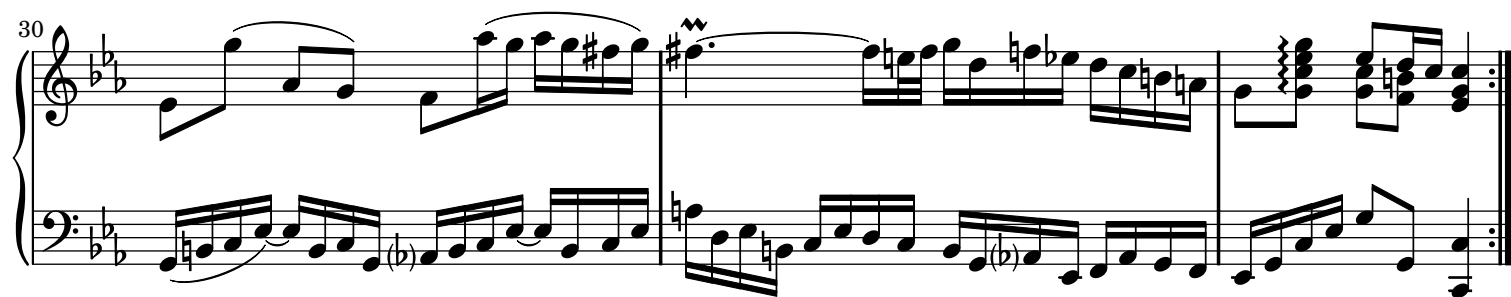
Measures 24-25. Measure 24 has a treble staff with a continuous eighth-note melody and a bass staff with a simple eighth-note accompaniment. Measure 25 continues the treble staff's melody, which includes a sharp sign (F#) indicating a chromatic alteration, while the bass staff accompaniment remains consistent.

26

Measures 26-27. Measure 26 features a treble staff with a melodic line containing some grace notes and a bass staff with a simple eighth-note accompaniment. Measure 27 continues the treble staff's melody and the bass staff's accompaniment.

28

Measures 28-29. Measure 28 has a treble staff with a melodic line and a bass staff with a steady eighth-note accompaniment. Measure 29 features a treble staff with a descending melodic line and a bass staff with a simple eighth-note accompaniment.



Sheet music from www.MutopiaProject.org • *Free* to download, with the *freedom* to distribute, modify and perform.

Typeset using www.LilyPond.org by Carl M. Bolstad. Reference: Mutopia-2006/08/21-602

This sheet music has been placed in the public domain by the typesetter, for details see: <http://creativecommons.org/licenses/publicdomain>